



AUBURN
UNIVERSITY

BIOSYSTEMS ENGINEERING

SINGLE & DUAL MAP ANALYSES

GIS Laboratory Assignment Six

BSEN 5220

Rosia Rowe
December 7th, 2018

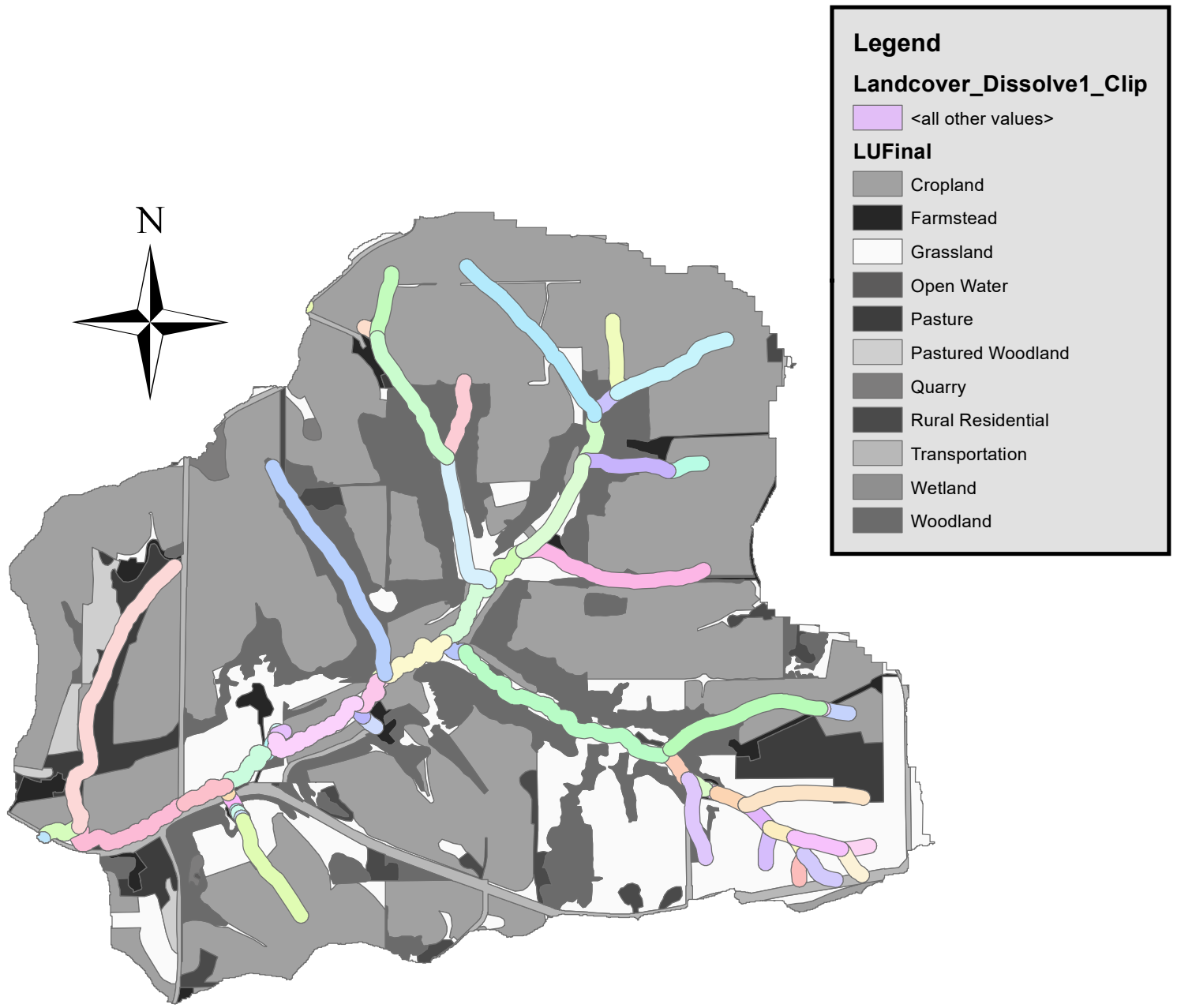
Question & Answer

The attribute table for the landcover file included the LUFinal classifications for each of the sections that were made. In total, there were 1016 different subsections of landcover types. After implementing the dissolve feature, all of the similar landcover types were combined into one within that data layer. The dissolved feature layer had 11 different subsections of landcover types after their combination. For the dissolved layer, the shape length and shape area were combined into one summation.

Lessons Learned

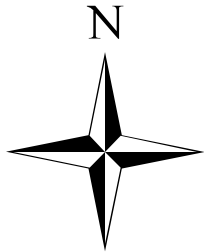
The objectives of this laboratory assignment were to use how to use the geoprocessing analysis tools. The dissolve, clip, and buffer tools were used in order to create a map that grouped similar landcover types together on one map using the dissolve tool. By using the clip tool, different shapefiles could be layered on top of each other, and cut down to the output constraint. By using this tool, the landcover types could be clipped down to the watershed, and the streams were clipped down to the watershed, too. The buffer tool was used to create a 100-foot boundary around the stream before it was clipped down to the watershed boundary. By completing this lab, the objectives of learning how to use the geoprocessing analysis tools were met.

Stream Buffer at 100 feet



0 0.125 0.25 0.5 0.75 1
Miles

Land Uses within Subwatershed



Legend

Landcover_Dissolve1_Clip

- <all other values>

LUFinal

- Cropland
- Farmstead
- Grassland
- Open Water
- Pasture
- Pastured Woodland
- Quarry
- Rural Residential
- Transportation
- Wetland
- Woodland

